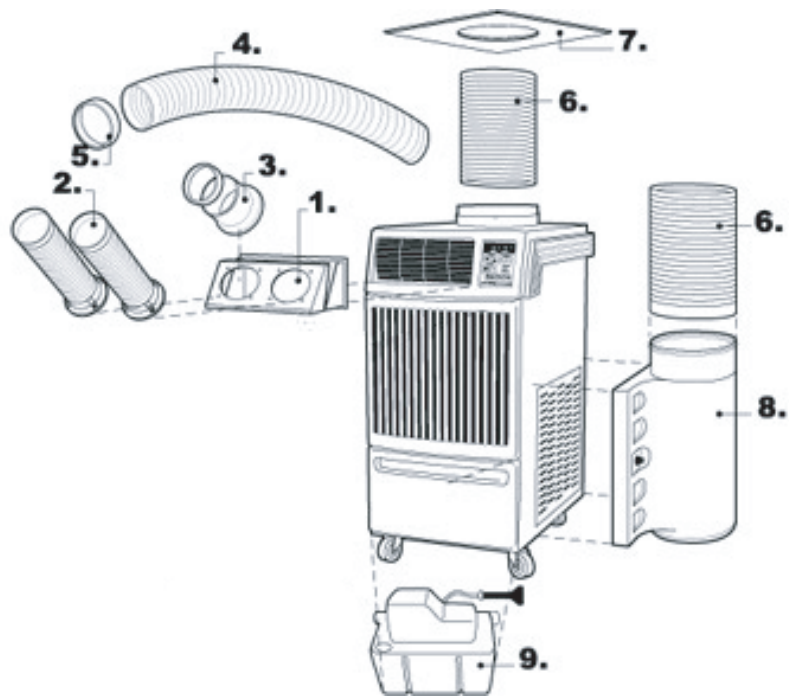


# ACCESSORIES

## Office Pro 12



No. □	Part Name □	Description □	Part Number
1. □ □ □	Nozzle Adapter □ □ □	Two-piece metal frame converts airflow from louvers to nozzles or cold air ducts. Includes mounting screws. (Nozzles and ducts sold separately.) □	LA481769-0170
2. □ □ □	Nozzle □ □ □	5" diameter white plastic nozzle that extends up to 3-1/2' in length. Includes flange, mounting screws and trim ring. (Purchase in sets of two.) □	484209-0060
3. □ □	Cold Air Flange □ □	5" diameter white metal flange with wire clamp and mounting screws. Use with cold air ducts. □	481170-0180
4. □ □	Cold Air Self-Supported □ Duct □	5" adjustable diameter, white PVC duct that extends from 6-1/2' to 10' in length. □	481744-0090
5. □	Trim Ring □	5" diameter black end-cap for cold air self-supported duct. □	481851-0200
6. □ □	Warm Air Self-Supported □ Duct □	12" diameter white, PVC plastic duct that extends 6-1/2' to 10' in length. □	481744-0060
7. □ □	Ceiling Tile □ □	24" x 24" white tile with 12" hole for warm air self-supported duct. □	LA146373-8280
8. □ □	Condenser Air Plenum □ □	White plastic plenum for return air to condenser. Hinged for filter cleaning. □	LAY84270-0010
9. □ □	Condensate Pump Kit □ □	110V pump kit includes 3/8" diameter x 20' length clear vinyl hose and installation hardware. □	CPK3