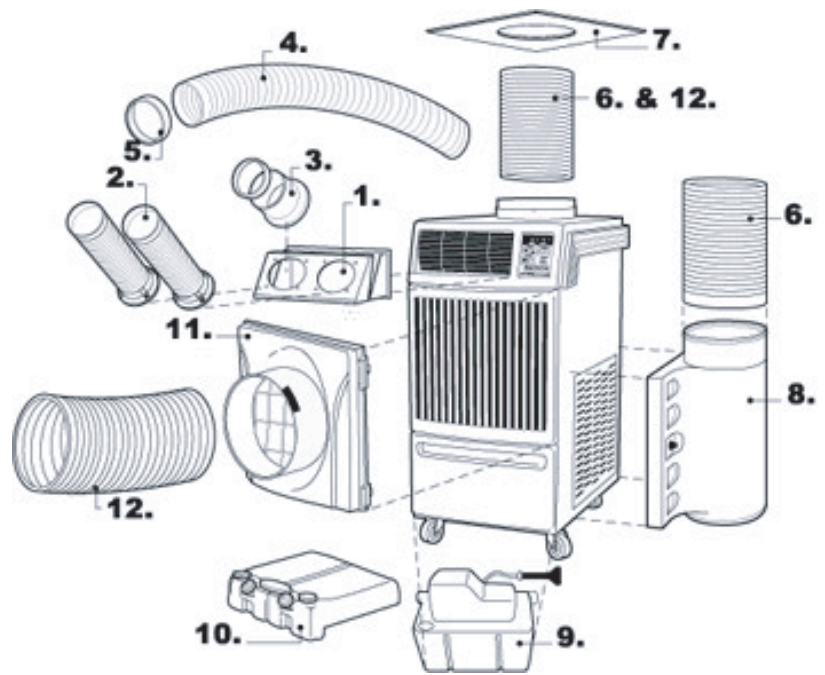


ACCESSORIES

Office Pro 60



| No. □ | Part Name □ | Description □ | Part Number |
|--------------------------|----------------------------------------------------|-----------------------------------------------------------------------------------------------------------------------------------------------------|--------------------------------------------------------------------------------|
| 1. □ □ □ | Nozzle Adapter □ □ □ | Four-piece metal frame converts airflow from louvers to nozzles or cold air ducts. Includes mounting screws. (Nozzles and ducts sold separately.) □ | LAY45770-0070 (6") |
| □ □ | Duct Adapter □ □ | Same as above, but for use with cold air flexible ducts. Includes flange. (Cold air flexible ducts sold separately.) □ | LAY45770-0080 (8") |
| 2. □ □ □ | Nozzle 6" diameter □ □ □ | white plastic nozzle that extends up to 3-1/2' in length. Includes flange, mounting screws and trim ring. (Purchase two sets of two.) □ | 484209-0050 (6") |
| 3. □ □ | Cold Air Flange □ □ | 6" diameter white metal flange with wire clamp and mounting screws. Use with cold air ducts. □ | 481170-0250 (6") |
| 4. □ □ □ □ □ | Cold Air Self-Supported Duct □ □ □ □ □ | 6" or 8" adjustable diameter, white PVC duct that extends from 6-1/2' to 10' in length. □ | 481744-0030 (6") |
| □ □ □ □ | Cold Air Flexible Duct □ □ □ □ | 8" diameter wire-reinforced, accordion-style duct in □ 25' lengths. □ □ □ | LAY45810-0030 (8") or LA-146499-0320 □ (8" PVC duct) also □ available |
| 5. □ | Trim Ring □ | 6" diameter black end-cap for cold air self-supported duct. □ | 481851-0210 |
| 8. □ □ | Condenser Air Plenum □ □ | White plastic plenum for return air to condenser. Hinged for filter cleaning. □ | LAY84270-0060 |
| 9. □ | Condensate Pump Kit □ | Included with this model. □ | NA |
| 10. □ □ | Condensate Tank □ □ | Drain tank storage for condensation. Requires condensate float, sold separately. □ | 484730-0010 |
| □ | Condensate Float (not shown) □ | Controls water level in condensate tanks. □ | 484460-0010 |
| 11. □ | Evaporator Air Plenum □ | White plastic plenum for return air to evaporator. □ | LAY84270-0070 |
| 12. □ □ | Warm Air Flexible Duct Kit □ □ | 16" diameter wire-reinforced, accordion-style duct for condenser exhaust or evaporator intake. Includes clamp. □ | LAY45820-0010 |
| N/A □ □ | Caster Swivel Locks □ (not shown) □ | Locks swivel on rear casters for improved maneuverability of unit. Sold in sets of two. □ | LAY46521-0020 |