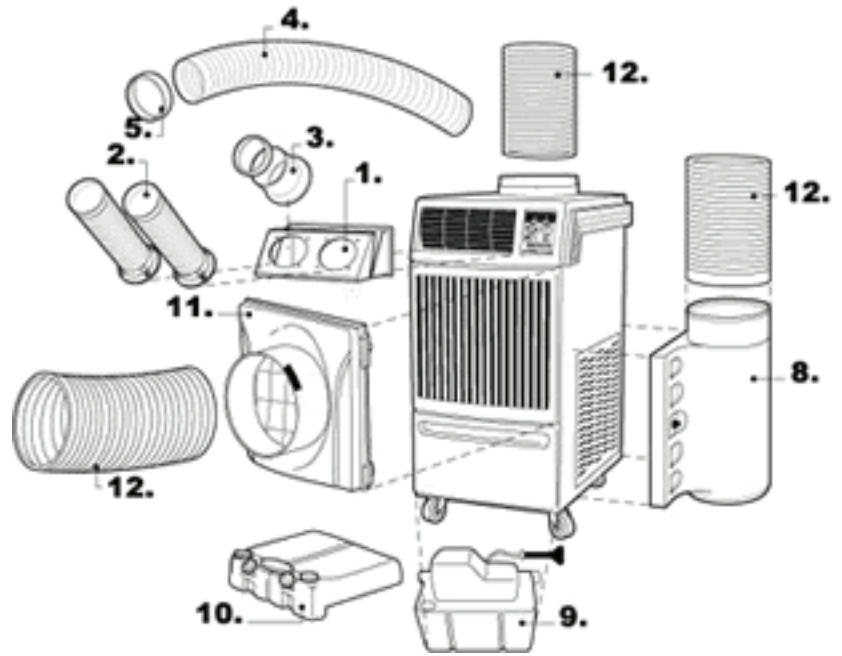


# ACCESSORIES

## Office Pro 63



No.	Part Name	Description	Part Number
1.	Nozzle Adapter	Three-piece metal frame converts airflow from louvers to nozzles or cold air ducts. Includes mounting screws. (Nozzles and ducts sold separately.)	LAY45770-0070 (6")
	Duct Adapter	Same as above, but for use with cold air flexible ducts. Includes flange. (Cold air flexible ducts sold separately.)	LAY45770-0080 (8")
2.	Nozzle Kit	6" diameter white plastic nozzle that extends up to 3-1/2' in length. Includes flange, mounting screws and trim ring. (Purchase two sets of two.)	484209-0050 (6")
3.	Cold Air Flange Kit	6" diameter white metal flange with wire clamp and mounting screws. Use with cold air ducts.	481170-0250 (6")
4.	Cold Air Self-Supported Duct	6" or 8" adjustable diameter, white PVC duct that extends from 6-1/2' to 10' in length.	481744-0030 (6")
	Cold Air Flexible Duct	8" diameter wire-reinforced, accordion-style duct in 25' lengths.	LAY45810-0030 (8") or LA-146499-0320 (8" PVC duct) also available
5.	Trim Ring	6" diameter black end-cap for cold air self-supported duct.	481851-0210
8.	Condenser Air Plenum	White plastic plenum for return air to condenser. Hinged for filter cleaning.	LAY84270-0060
9.	Condensate Pump Kit	Included with this model.	NA
10.	Condensate Tank	Drain tank storage for condensation. Requires condensate float, sold separately.	484730-0010
	Condensate Float (not shown)	Controls water level in condensate tanks.	484460-0010
11.	Evaporator Air Plenum	White plastic plenum for return air to evaporator.	LAY84270-0070
12.	Warm Air Flexible Duct Kit	16" diameter wire-reinforced, accordion-style duct for condenser exhaust or evaporator intake. Includes clamp.	LAY45820-0010